



San Francisco Unified School District Profile

50,046

Total students

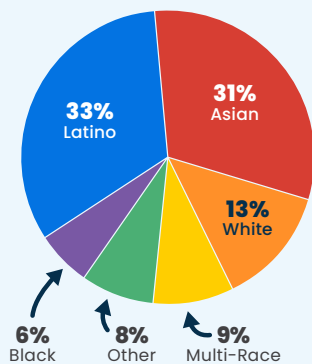
56%

Economically Disadvantaged

25%

English Language Learners

Race/Ethnicity



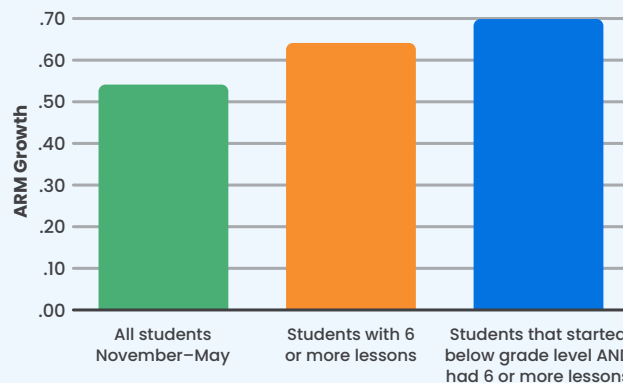
We have seen greater engagement from some students who were ready to pass out of SPIRE to have an interim bridge to keep pushing them. I like the “middle school” level of inferencing and other skills. I also like the bilingual components of the program especially for long term English language learners.”

Reading Accelerator Success in San Francisco Unified School District

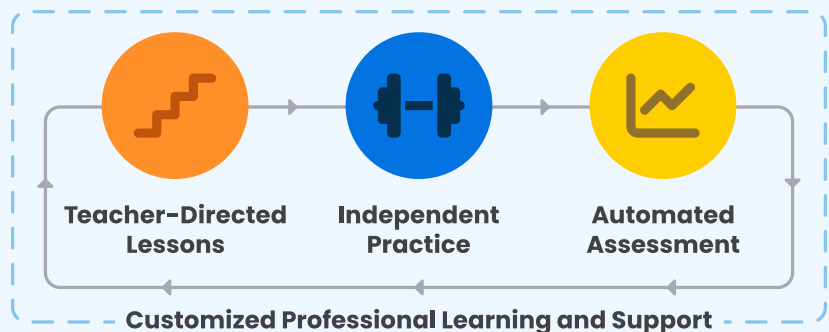
In the 2024–2025 school year, San Francisco Unified School District implemented EPS Learning’s Reading Accelerator program to support students below grade level in oral reading fluency (ORF). These students faced foundational reading gaps that limited their access to grade-level literacy, a common challenge in secondary schools where literacy needs are high but resources are limited. Most secondary schools rely on comprehension assessments alone, lacking scalable ways to identify and address foundational reading skill gaps.

The greatest gains were seen in students who began below grade level, showing the most Amira Reading Master (ARM) score growth. Their CorrectWords Per Minute (CWPM) also improved with the number of lessons received—more instruction led to greater fluency gains.

Amira Reading Mastery Student Growth



Note: The Amira Reading Mastery (ARM) score is a key composite measure in EPS Reading Assistant, providing a universal scale to assess reading ability across all levels.



EPS READING ACCELERATOR

Meeting the Specific Needs of Elementary and Middle School Students

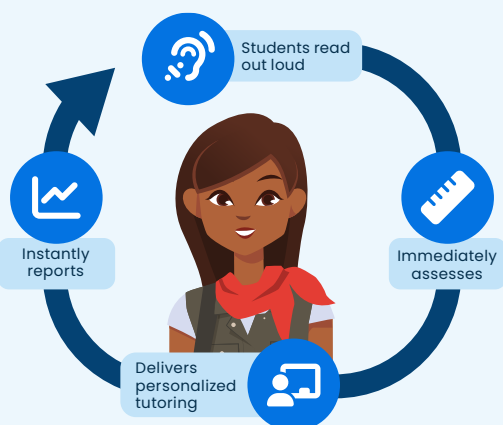
EPS Reading Accelerator offers two editions, tailored for either elementary or middle school striving readers. Each edition features age-appropriate, engaging content, all within a Structured Literacy framework designed to differentiate instruction and meet the unique needs of each age group.



EPS READING ASSISTANT

Practice with Complex, Connected Text for Fluency and Comprehension

Use an AI-powered tool in conjunction with SPIRE to provide students with valuable oral reading practice as they read appropriately challenging complex texts.



Reading Assistant received ESSA Strong rating and the first ever CODiE award for Best Science of Reading Skills Solution (2023).

SPIRE INTERVENTION

What Sets SPIRE Apart

SPIRE is an evidence-based, Orton-Gillingham-based multisensory reading intervention for PreK-8+ students in Tier 3 and special education. Grounded in the science of reading and Structured Literacy, it delivers intensive instruction across all five pillars of reading.



- ✓ **Proven Effective** – Structured Literacy, Orton-Gillingham-based, with decades of success.
- ✓ **Teacher-Friendly** – Softly scripted, step-by-step lessons provide structure with flexibility.
- ✓ **Easy to Implement** – Teachers can get started with just one day of training.



ies
WHAT WORKS
CLEARINGHOUSE

Visit epslearning.com to view our range of curriculum programs.
Questions? Contact your EPS Learning Account Executive.

epslearning.com | 866.716.2820

