

SPIRE Success in Bentonville Schools



Bentonville Schools Profile

19,575

Total students

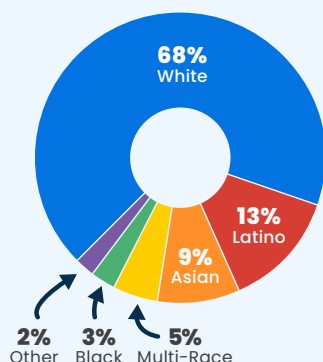
19.11%

Economically Disadvantaged

5%

English Language Learners

Race/Ethnicity

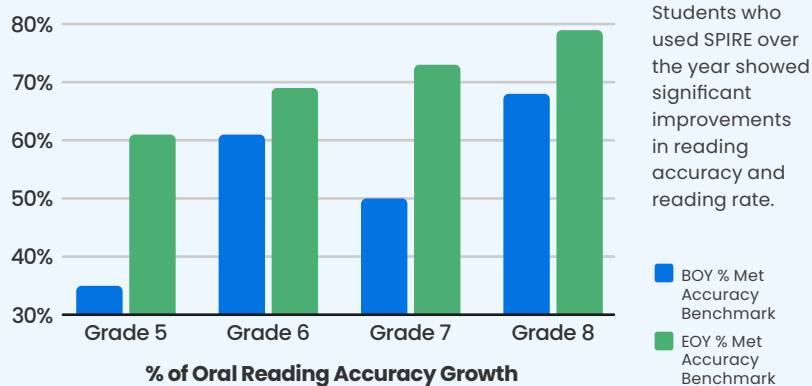


Since implementing the SPIRE program, Bentonville Schools has seen significant improvements in reading outcomes. Prior to SPIRE, student growth in reading was minimal, and few students exited the intervention program. Additionally, the number of students served remained consistent across grade levels, indicating persistent needs without resolution.”

Before implementing SPIRE, Bentonville Schools faced persistent challenges in their secondary dyslexia intervention program. Students showed some improvement in reading accuracy, but gains in reading rate were limited, and few were able to exit the program. The number of students needing support remained steady year over year. SPIRE was introduced to address these challenges more effectively, with a structured approach designed to build both Structured Literacy approach.

Since implementation, students have shown measurable gains in both reading accuracy and rate. More significantly, the number of students requiring intervention has steadily declined, indicating that more students are making sufficient progress to exit the program. These trends highlight the long-term impact of early, Structured Literacy instruction through SPIRE.

Comparison of BOY and EOY Students Meeting Accuracy Benchmark



Systematic

Multisensory

Explicit

Cumulative

Ongoing Assessment

Independent Practice



What Sets SPIRE Apart



SPIRE is an evidence-based, Orton-Gillingham-based multisensory reading intervention for PreK–8+ students in Tier 3 and special education. Grounded in the science of reading and Structured Literacy, it delivers intensive instruction across all five pillars of reading.

- ✓ **Proven Effective** – Structured Literacy, Orton-Gillingham-based, with decades of success.
- ✓ **Teacher-Friendly** – Softly scripted, step-by-step lessons provide structure with flexibility.
- ✓ **Easy to Implement** – Teachers can get started with just one day of training.

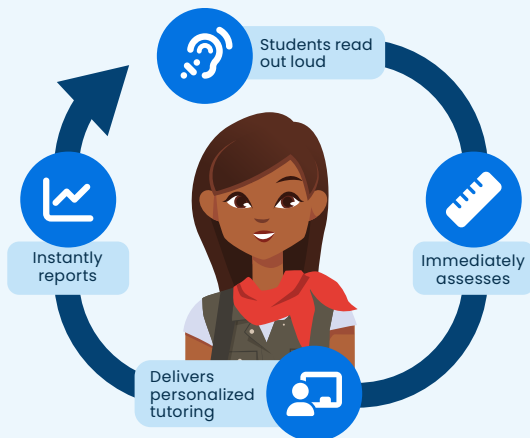


SPIRE Independent Practice

EPS READING ASSISTANT

Practice with Complex, Connected Text for Fluency and Comprehension

Use an AI-powered tool in conjunction with SPIRE to provide students with valuable oral reading practice as they read appropriately challenging complex texts.



The technology behind Reading Assistant is **ESSA-approved** and received the first-ever **CODIE award for Best Science of Reading Skills Solution**.

SPIRE DECODABLE READERS

Skills-Focused Practice for Lesson Reinforcement

120 decodable readers ensure students have ample opportunities to directly apply the specific skills taught during teacher-led lessons.



Visit epslearning.com to view our range of curriculum programs.
Questions? Contact your EPS Learning Account Executive.

epslearning.com | 866.716.2820

