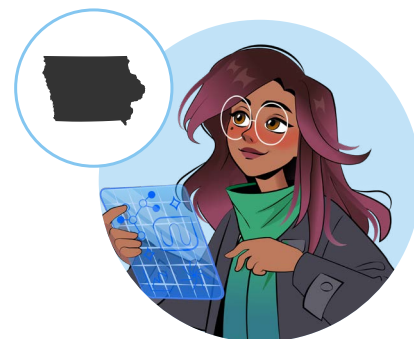


EPS Reading Assistant Launch Checklist for Iowa Schools



Task to complete (✓ as you go)		
<input type="checkbox"/>	Watch the Webinar: Getting Started with EPS Reading Assistant	Getting Started Video
<input type="checkbox"/>	Check your rosters and devices Make sure your students will have access to EPS Reading Assistant from their devices and that their microphones are working.	Troubleshooting guide
<input type="checkbox"/>	Consider sending a letter home to families. Click the link for an editable copy	Editable Family Letter
<input type="checkbox"/>	Introduce EPS Reading Assistant to your students Use the lesson plans to explain how EPS Reading Assistant works and to set expectations. Click the link to make your own copy and add your class's directions to slide 12.	Grades PreK–4 Grades 5–8
<input type="checkbox"/>	Make adjustments to any Spanish Language or Early Reader Skill Sequence settings for practice and assessments.	Adjust Tutor Settings Adjust Assessment Setting
<input type="checkbox"/>	Assign a Beginning of Year Benchmark (BOY) Assessment if your District has not already done so.	Benchmark Assignments from Teacher
<input type="checkbox"/>	Encourage practice and check the Iowa EPS Reading Assistant Website periodically for updates!	100 Story Challenge EPS Reading Assistant – Iowa